



July 2025

Auckland Prison Capacity Increase Proposal

Auckland Prison was first established in 1969 in Paremoremo and is set within 80 hectares of Crown-owned land. Auckland Prison has been designated for prison purposes for over 35 years.

Currently, Auckland Prison houses approximately 680 prisoners ranging from low to high security as well as New Zealand's only maximum-security facility.

Why changes are being proposed?

New Zealand has a rising prison population and we have a responsibility to keep communities safe. To safely manage increasing prisoner numbers, we're proposing to increase the total number of prisoners which Auckland Prison is permitted to accommodate.

Proposal to increase capacity limits at Auckland Prison

The Department of Corrections – Ara Poutama Aotearoa (Corrections) is proposing to change the existing designation for Auckland Prison to allow for an increase in capacity from 681 to 1,220 prisoners. This change is needed to meet projected prison population growth in the region. Any new development to increase capacity at Auckland Prison is anticipated to be staged over approximately a 10-year period.

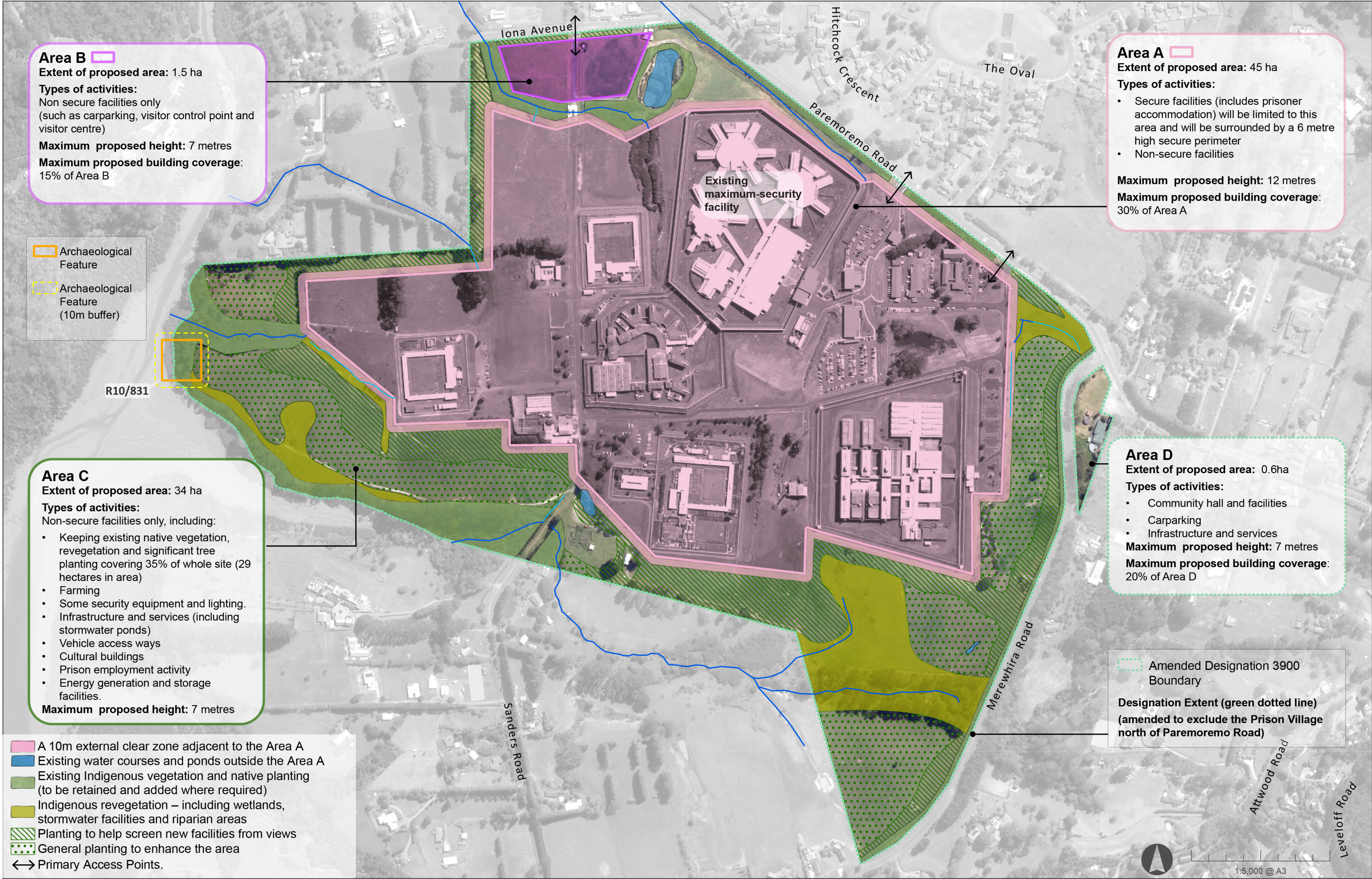
Planning is in the early stages, and we have done some technical work to help us understand what we are able to do in terms of potential future development activity.

To meet future demand in the prison network, Corrections is proposing to:

- Alter the existing designation in the Auckland Unitary Plan to allow for a capacity increase at Auckland Prison to 1,220 prisoners.
- Remove the Prison Village from the Auckland Prison designation. This is because Corrections only requires the designation for the operational prison, located opposite the Village (to the south-west of Paremoremo Road).
- Obtain resource consents for extending the piping of some streams (and associated works) within the designation.
- Obtain a precautionary archeological authority and wildlife permit to enable future development at Auckland Prison.
- Submit the application to increase the capacity, and associated approvals, to the Environmental Protection Authority (EPA) under the Fast-Track Approval Act 2024 later this year.
- Build new facilities for prisoners over time, subject to future funding decisions. This means some existing facilities may be demolished (except for the maximum-security facility) to make way for new, modern, and fit-for-purpose prison facilities. Preparatory works may be also undertaken on the site prior to any design being finalised.

Figure 1 and Table 1 of this booklet provide an overview of the proposal.

Figure 1: Overview of Auckland Prison Capacity Increase Proposal



The project team has been working with a range of technical experts (noise, light, traffic, landscape and visual, economics, infrastructure, social, cultural, archaeology, ecology and planning) to establish 'development parameters'.

The proposed parameters have been introduced to guide the design of any future development at the site. This gives flexibility for future design, while still allowing experts to assess how the proposal might affect the environment and nearby communities. Some main points of the Proposal are outlined in the below table:

Table 1 Main Points of the Proposal

Type of prisoners	Up to 960 low to high security Up to 260 maximum security
Anticipated number of additional staff	It is anticipated that staff numbers may increase by 50%
Spatial extent of Auckland Prison Designation	The designation would be removed from the Prison Village area, north of Paremoremo Road, because Corrections only requires the designation for the operational prison land. The spatial extent of the designation would not be expanded (refer to Figure 1).
Identified areas for new buildings and facilities	All secure facilities would be contained within a secure perimeter in Area A (refer to Figure 1). New secure facilities (e.g. prisoner accommodation, gatehouses, prisoner visits areas) must be located within the secure perimeter. Secure facilities cannot be located outside of Area A. Non-secure facilities (e.g. staff and visitor carparking, surveillance equipment and lighting, prison access control points) may be located in Areas A-C (refer to Figure 1). The community hall at 505 Paremoremo Road would remain within the designation and is identified as Area D (refer to Figure 1).
Height	While there are currently no maximum height limits, we are proposing to introduce maximum height limits across the whole site to reduce the bulk and dominance of the prison buildings from surrounding properties and the environment. This means future buildings would be designed to comply with maximum height limits as identified in Figure 1. <ul style="list-style-type: none">• Area A: Maximum height is 12 metres, or 6 metres for the secure perimeter.• Area B-D: Maximum height is 7 metres.
Building coverage	While there is currently no maximum building coverage , we are proposing to introduce a maximum building coverage to provide certainty that not all of the land within the site would be occupied by buildings. This will result in more land being used for open space than buildings (refer to Figure 1).
Landscaping	While there is an existing landscape plan, an updated landscaping plan has been introduced across the whole site to mitigate visual effects and integrate the proposed new facilities into the landscape context. This means 29 hectares of new planting (trees and shrubs) is proposed on Corrections land in Area C (refer to Figure 1).
Lighting	Lighting is required for security reasons at night. While currently only a small section of the site in the northwestern corner has lighting controls, we are proposing to introduce lighting controls for the whole site to align with Auckland Unitary Plan standards. This means: <ul style="list-style-type: none">• Lighting would be designed and located to confine lighting fall to the Auckland Prison site and minimise the potential lighting effects (including glare) as far as practicable, and so that the prison facilities do not cause a nuisance to neighbours.• New lighting poles would be no closer than 20m to site boundaries (except for Iona Avenue road boundary).

Auckland Prison

Table 1 Main Points of the Proposal continued

Noise	Prisons are generally quiet and do not generate excessive noise. Noise controls in the designation would be updated to align with best practice standards and ensure noise is compatible with existing levels of amenity.
Road access	Road access is required to facilitate safe and efficient vehicle movements. The proposal includes a primary vehicle access point at Iona Road / Sanders Avenue for new facilities, in conjunction with existing access points at Paremoremo Road.
Traffic generation	<ul style="list-style-type: none">• During staff shift changeover periods, traffic could increase by approximately 55%, compared to current traffic generated by the existing prison.• At other times of the day and especially later in the afternoon, the additional traffic volumes associated with the capacity increase are expected to be less than approximately 40 vehicles per hour.• In the evenings and overnight the additional traffic volumes associated with the new facilities could be generally less than 10 additional vehicles per hour.

Glossary

Building coverage is the portion of the site (or area of the site) that is covered by buildings or parts of buildings.

Designation is a control placed over land and shown in a district plan or in Auckland's case the Auckland Unitary Plan. The designation shows land that has been set aside for a specific public work (like a prison) even if that use hasn't been built yet.

Environmental Protection Authority (EPA) is a government agency that makes sure larger projects follow environmental rules and decides whether it can go ahead.

Fast-Track Approvals Act 2024 (FTAA) is a law for large infrastructure and development projects to get the approvals they need by combining multiple consent processes into one streamlined system. It's designed to support projects that bring national or regional benefits, while still considering environmental and Treaty obligations.

Non-secure facilities include the following:

- Staff and Visitor Carparking;
- Surveillance equipment and lighting;
- Prison management, security and operations support;
- Prison access control points;
- Visitors' reception centres;
- External deliveries stores;
- Roading;
- Administration and staff amenities;
- Facilities management and trade parking;

- Energy generation and storage facilities;
- Cultural buildings;
- Community facilities;
- Infrastructure and Services; and
- Stormwater management devices.

Resource consent is a permission often given by council to carry out an activity that is not automatically allowed under a district or regional plan.

Secure facilities include prisoner accommodation and associated facilities, including the following:

- Secure perimeter;
- Gatehouses (secure entry and exit points);
- Prisoner receiving centres;
- Specialist units including special treatment, at-risk and drug treatment unit;
- Prisoner visits areas;
- Health centres;
- Kitchens/laundries;
- Sports halls/gymnasiums and sports fields, exercise yards; and
- Programme facilities such as classrooms, meeting rooms and staff offices.

Auckland Prison Information Booklet

What does the fast-track process involve?

The Fast-track Approvals Act 2024 (FTAA) was created to fast track the approval process for major infrastructure and development projects that benefit New Zealand at a regional or national level.

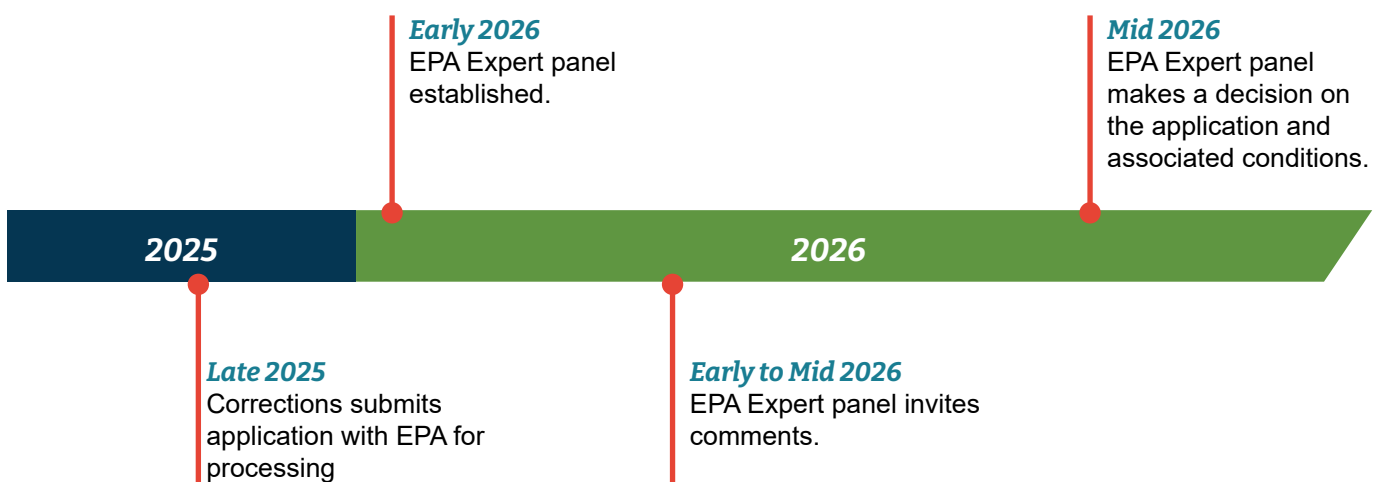
The Auckland Prison Capacity Increase Project has been included as a project in the schedule to the FTAA. Later this year the Corrections will submit an application to the EPA, under the fast-track process, for the designation alteration, resource consents to extend the piping of some streams within the designation, and other approvals.

An expert panel reviews the full application (known as the substantive application), considers environmental, social and cultural impacts, and decides whether to approve the proposal and under what conditions.

You can find out more about the fast-track process at the EPA website: <https://www.fasttrack.govt.nz>

Proposal timeline

The estimated proposal timeline is shown below.



For information on the proposal you can:

- Visit our website: www.corrections.govt.nz/APdesignation
- Email APengagement@corrections.govt.nz to receive updates as the project progresses or with your queries.